

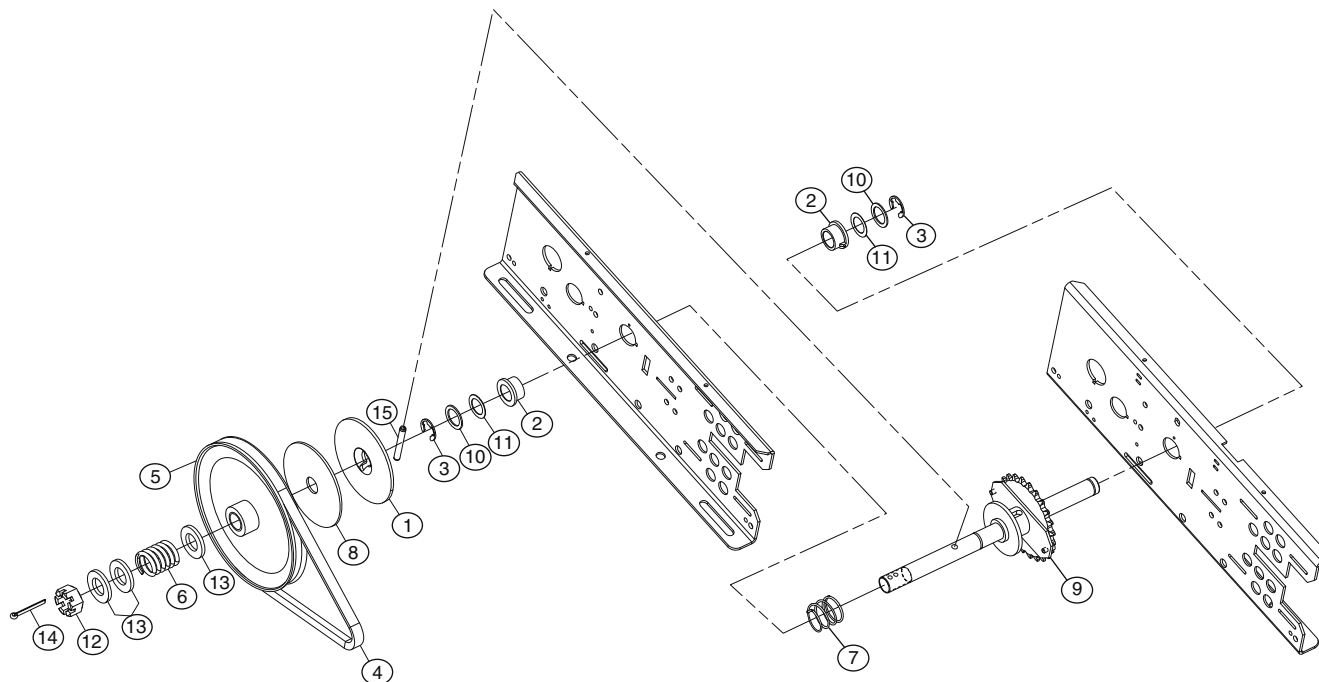
### APPLICATION REQUIREMENTS

Replacement of Clutch Shaft and/or its components for a Model MJ Operator.

#### CARTON INVENTORY

ITEM	QTY	DESCRIPTION
1	1	Clutch Disc
2	2	Flange Bearing , 3/4 ID X 1 OD X 5/8 L, 1/8 key, 1-1/4 OD X 1/8 THK FLG, FE-CU OL
3	2	E-Style Ext Ret Ring, 3/4, SPR STL, Phos Coated
4	1	4L V-Belt, 29.0 LG
5	1	4L Motor Pulley, 7" O.D.
6	1	Compression Spring
7	1	Disconnect Spring
8	1	Clutch Disc
9	1	Clutch Shaft Assembly
10	2	Shim Washer .800 ID X 1-1/8 OD X .050 THK
11	2	Shim Washer 3/4 ID X 1-1/8 OD X .010 THK
12	1	3/4-16 UNF-2B Hex Sltd Nut, GR 2 STL, ZN PLD
13	3	Flat Washer, 3/4, SAE, STL, ZN PLD
14	1	Cotter Pin, 5/32 X 1-1/2, Extended Prong Type, ZN PLD STL
15	1	Pin, Sltd Spr, 1/4 X 2, PL STL

**WARNING:** This product can expose you to chemicals including lead, which are known to the State of California to cause cancer or birth defects or other reproductive harm. For more information go to [www.P65Warnings.ca.gov](http://www.P65Warnings.ca.gov)



# INSTALLATION

**NOTE:** Refer to the Owner's Manual supplied with the operator for all mounting and wiring instructions. You will be required to reset limit nuts after installation.

## INSTALLATION RECOMMENDATIONS

1. Disconnect power to operator.
2. Close door and secure.
3. Remove the drive chain from the operator to the door.
4. Remove operator from its location.
5. Refer to the owner's manual provided with the operator for all mounting and wiring instructions.
6. Reset limits after operator is reinstalled.
7. Reapply power to the operator.
8. Test all safety equipment (if applicable) for proper functionality.

## **WARNING**

To prevent possible **SERIOUS INJURY** or **DEATH**, disconnect electric power to operator **BEFORE** installing.

