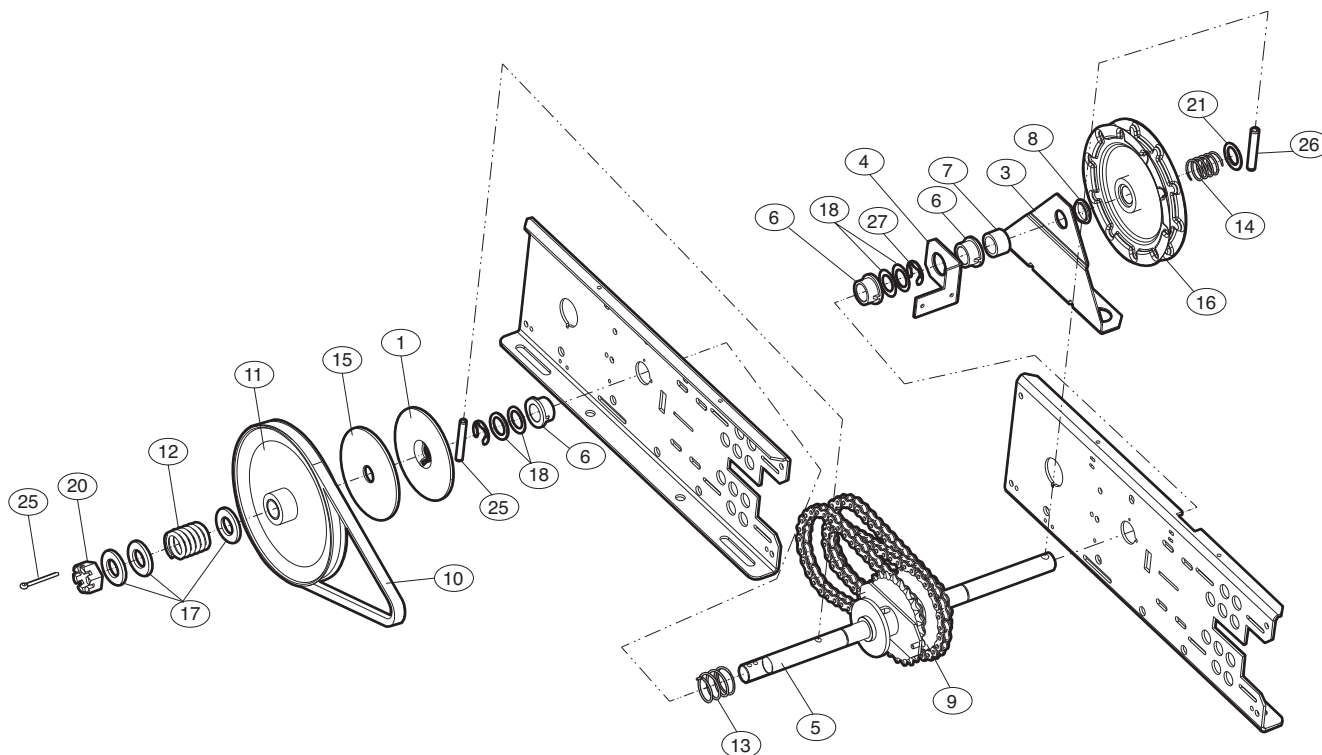


APPLICATION REQUIREMENTS

Replacement of Clutch Shaft and/or its components for a Model MHS Operator.

CARTON INVENTORY

ITEM	DESCRIPTION	QTY	ITEM	DESCRIPTION	QTY
1	Clutch Plate	1	15	Clutch Disc	1
2	Disconnected Plate	1	16	Chain Wheel	1
3	Chain Guide	1	17	Shim Washer, Thick	4
4	Release Holder	1	18	Shim Washer, Thin	6
5	Clutch Shaft	1	19	Screw, #10-32 x 5/16 Socket HH	2
6	Bearing 3/4" I.D.	3	20	Nut, 3/4-16 Castle	1
7	Bushing .753 ID x .625 Long	1	21	Flatwasher #10	2
8	NY Liner Bearing	1	22	Flatwasher 3/4"	4
9	Sprocket Assy, 48B10/41A24	1	23	Lock Washer, #10 Split Ring	2
10	Cogged Belt 4L290	1	24	Cotterpin 5/32 x 1-1/2" Long	1
11	4L Pulley 7" O.D.	1	25	Rollpin 1/4 x 1-1/8" Long	1
12	Spring, Clutch	1	26	Rollpin 5/16 x 2" Long	1
13	Spring, Disconnect	1	27	E Ring 3/4" Plated	4
14	Compression Spring	1			



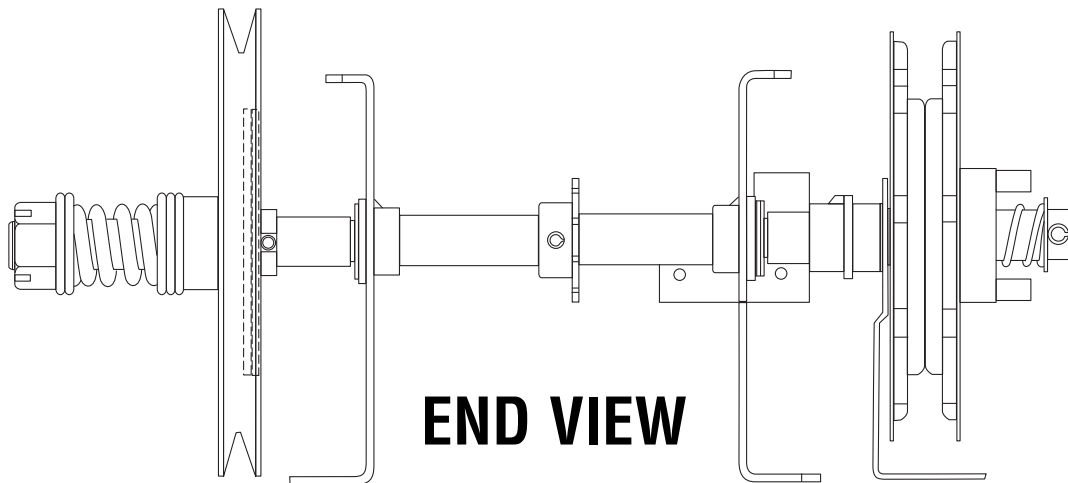
INSTALLATION

INSTALLATION RECOMMENDATIONS

1. Close door and secure.
2. Disconnect power to the operator.
3. Remove the drive chain from the operator to the door.
4. Remove operator from its location.
5. Refer to the owner's manual provided with the operator for all mounting and wiring instructions.
6. Reset limits after the operator is reinstalled.
7. Reapply power to operator.
8. Test all safety equipment (if applicable) for proper functionality.

WARNING

To prevent possible **SERIOUS INJURY** or **DEATH**, disconnect electric power to operator **BEFORE** installing.



END VIEW