

### APPLICATION REQUIREMENTS

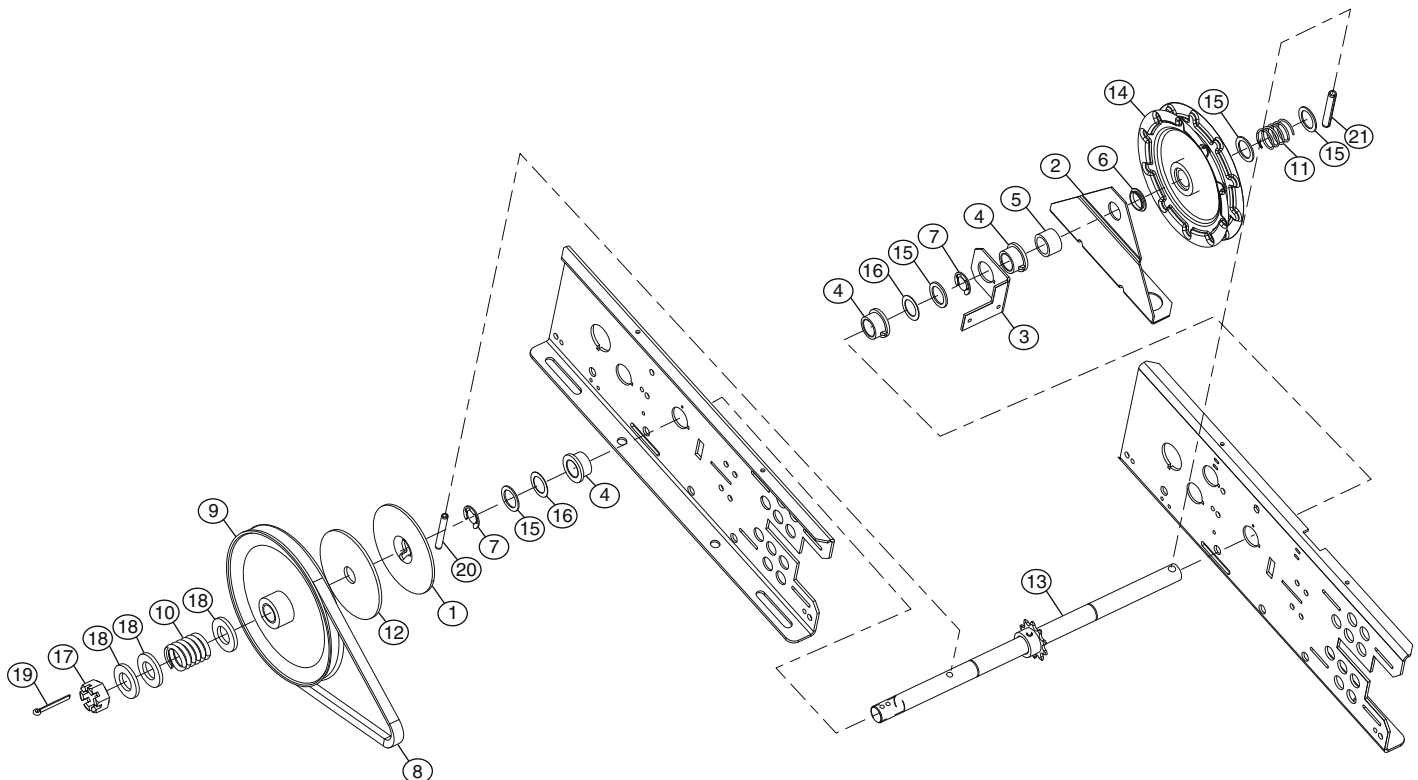
Replacement of Clutch Shaft and/or its components for a Model MH Operator.

### PACKING LIST

ITEM	QTY	DESCRIPTION	ITEM	QTY	DESCRIPTION
1	1	Clutch Disc	12	1	Clutch Disc
2	1	Chain Guide	13	3	Clutch Shaft Assembly, MH
3	1	Release Holder	14	1	Chain Wheel Assembly, MH
4	3	Flange bearing, 3/4 ID X OD 5/8 L, 1/8 Key, 1-1/4 OD X 1/8 Thk Flg, FE-CU OL	15	4	Shim Washer .800 ID X 1-1/8 OD X .050 Thk
5	1	Bushing, 3/4 ID X 1 OD X 5/8 L	16	2	Shim Washer 3/4 ID X 1-1/8 OD X .010 Thk
6	1	Nyliner bearing	17	1	3/4-16 UNF-2B Hex Sltd Nut, GR 2 STL, ZN PLD
7	2	E-Style ext ring, 3/4, Spr Stl, Phos Coated	18	3	Flat Washer, 3/4, SAE, STL, ZN PLD
8	1	4L V-Belt, 29.0 Lg	19	1	Cotter Pin, 5/32 X 1-1/2, Extended Prong Type, ZN PLD STL
9	1	4L Motor Pulley, 7" O.D.	20	1	Pin, Sltd Spr, 1/4 X 2, PL STL
10	2	Comp Spr, 1.225 OD, .177 Wire, 1.500 LG, 1.062 SOL HGT, Sq & Grnd Ends, MW, Oil	21	1	Pin, Sltd Spr, 5/16 X 2, PL STL
11	2	Comp Spr, .970 OD, .072 Wire, 1.250LG, .339 SOL HGT, Sq & Grnd Ends, MW, ZN			



**WARNING:** This product can expose you to chemicals including lead, which are known to the State of California to cause cancer or birth defects or other reproductive harm. For more information go to [www.P65Warnings.ca.gov](http://www.P65Warnings.ca.gov)



# INSTALLATION

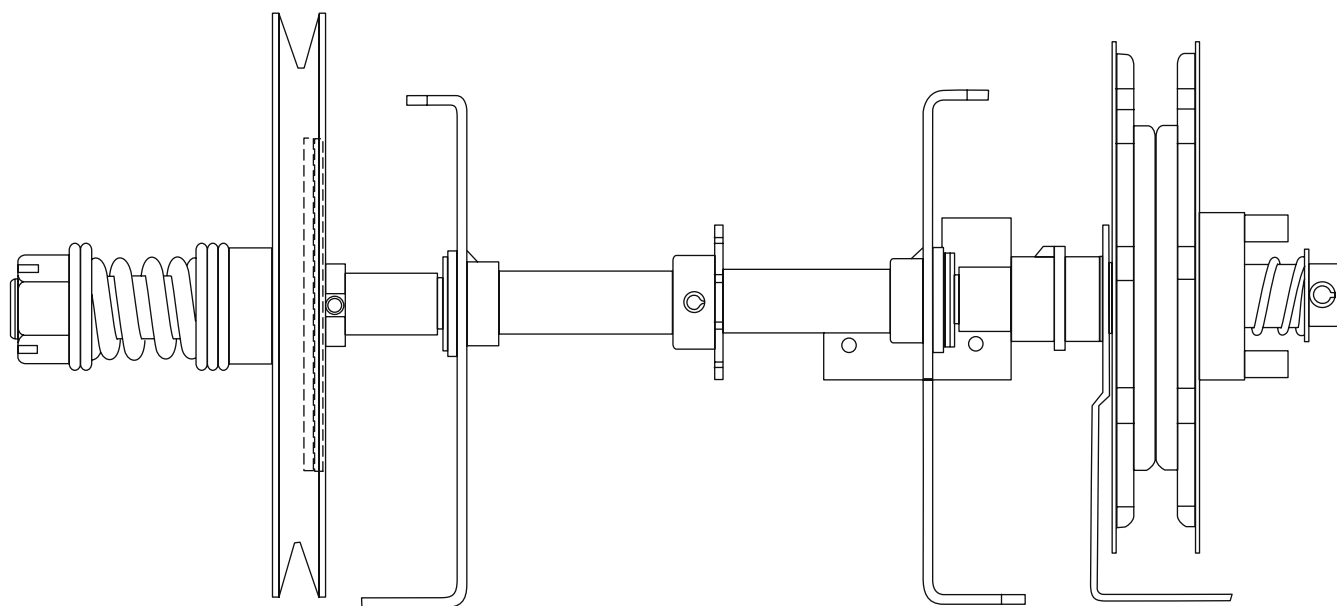
## **INSTALLATION RECOMMENDATIONS**

1. Close door and secure.
2. Disconnect power to the operator.
3. Remove the drive chain from the operator to the door.
4. Remove operator from its location.
5. Refer to the owner's manual provided with the operator for all mounting and wiring instructions.
6. Reset limits after the operator is reinstalled.
7. Reapply power to the operator.
8. Test all safety equipment (if applicable) for proper functionality.



## **WARNING**

To prevent possible **SERIOUS INJURY** or **DEATH**, disconnect electric power to operator **BEFORE** installing.



**END VIEW**