

APPLICATION REQUIREMENTS

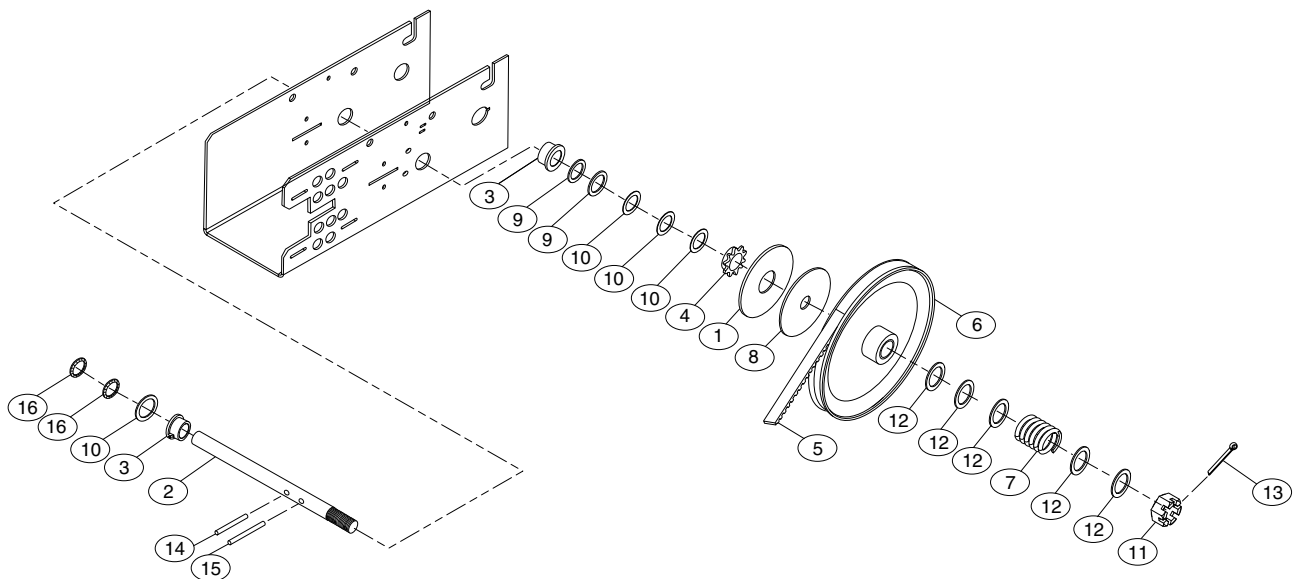
Replacement of Clutch Shaft and/or its components for models MT and BMT Operators.

PACKING LIST

ITEM	QTY	DESCRIPTION
1	1	Clutch Plate
2	1	Clutch Shaft
3	2	Bearing 3/4 ID
4	1	Sprocket, 48B10 x 3/4
5	1	Cogged Belt
6	1	4L Motor Pulley 7" OD
7	1	Spring, Clutch (1/3 & 1/2 HP)
8	1	Clutch Disk
9	2	Shim Washer Thick
10	6	Shim Washer Thin
11	1	Nut 3/4-16 Castle
12	5	Flatwasher 3/4 ID
13	1	Cotterpin 1/8 x 1-3/4 Long
14	1	Roll Pin 1/4 x 1-1/8 Long
15	1	Roll Pin 1/4 x 2 Long
16	2	Turac 3/4 Push on Fastener



WARNING: This product can expose you to chemicals including lead, which are known to the State of California to cause cancer or birth defects or other reproductive harm. For more information go to www.P65Warnings.ca.gov



INSTALLATION

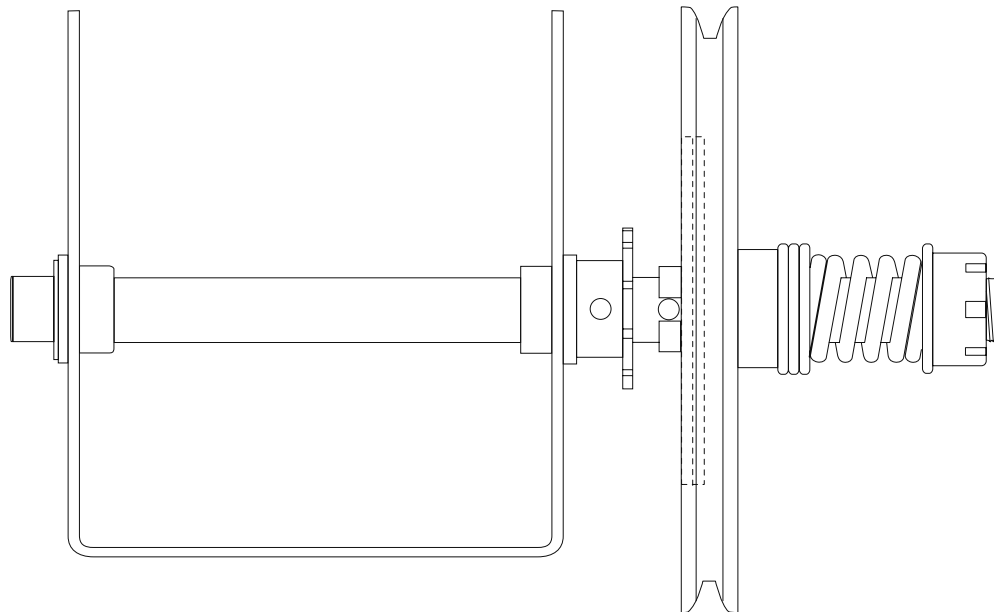
INSTALLATION RECOMMENDATIONS

1. Close door and secure.
2. Disconnect power to the operator.
3. Remove the drive chain from the operator to the door.
4. Remove operator from its location.
5. Refer to the owner's manual provided with the operator for all mounting and wiring instructions.
6. Reset limits after the operator is reinstalled.
7. Reapply power to operator.
8. Test all safety equipment (if applicable) for proper functionality.



WARNING

To prevent possible **SERIOUS INJURY** or **DEATH**, disconnect electric power to operator **BEFORE** installing.



END VIEW